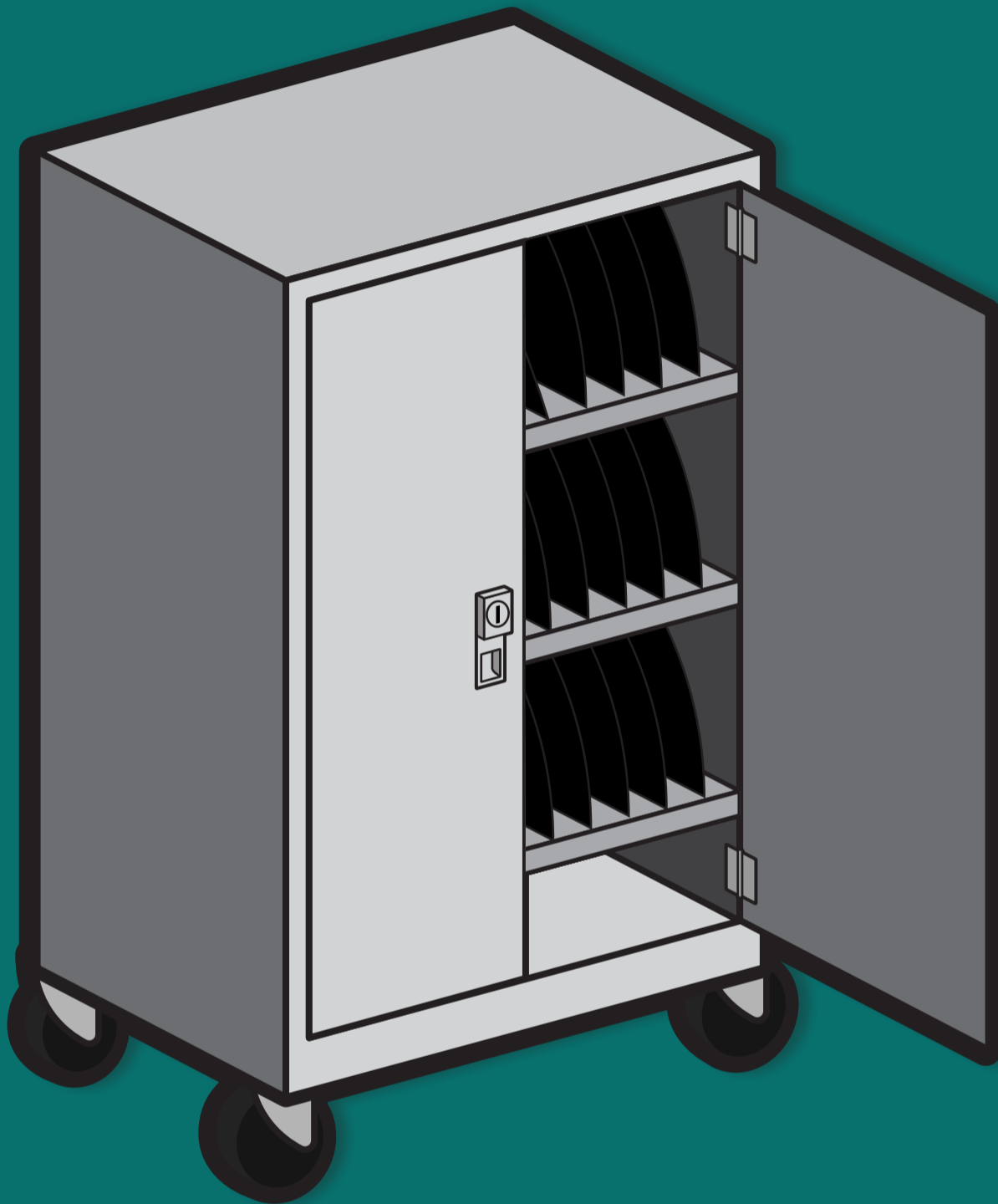
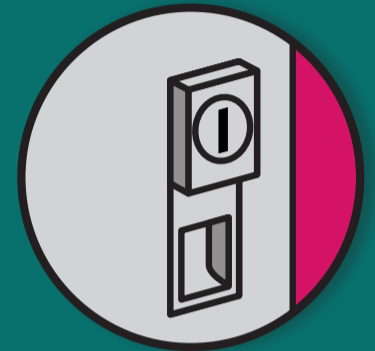


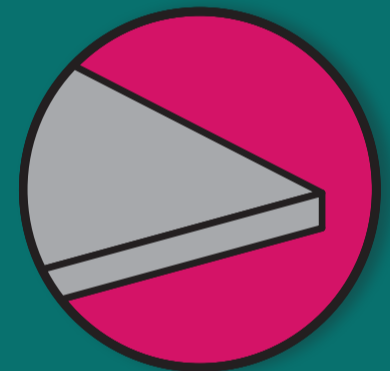
CHECK THESE FEATURES BEFORE CHOOSING A STORE AND CHARGE CART



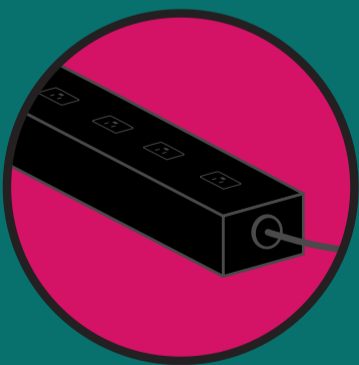
Dividers: Look for flexible power management dividers that can stand up to bending and bumping and won't easily break when removed and reinserted.



Locks and Hinges: Three-point locking and fully-hinged doors will provide a greater level of security.



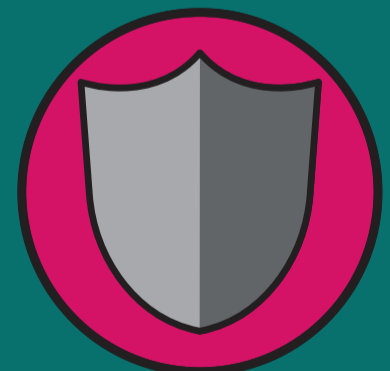
Shelves: A fully-loaded cart should have heavy duty shelves that won't sag under the weight of a full complement of devices.



Power Strips: All electrical components wear out over time. Make sure this component of your cart is easily accessible and replaceable.



Wheels: Cart wheels should be sturdy, stable, and non-marking for controlled maneuverability in and out of hallways, elevators, and classrooms.



Lifetime Warranty: A lifetime warranty is a good indication that the cart will last and your investment will be protected.